

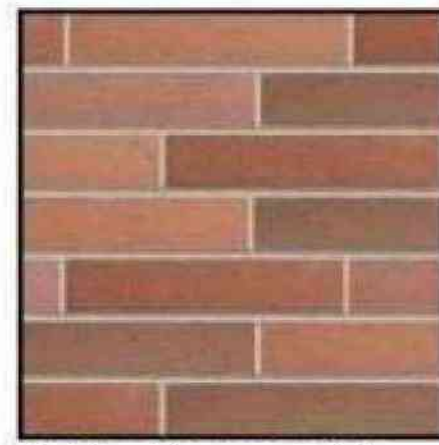
MATERIAL FINISHES



Reclaimed Metal Panel:
Vintage car hood occurs
at face of the tower
element only.



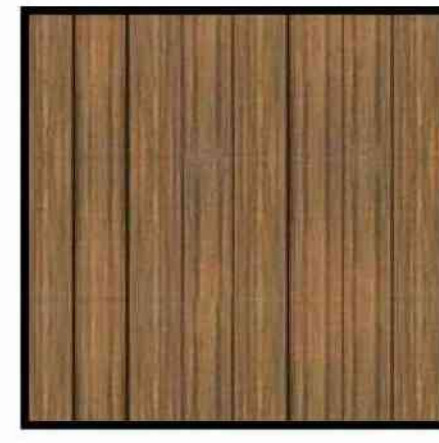
Aluminum storefront
system.
Finish: Anodized Black



Belden Norman Brick
Masonry Medium Range,
smooth, iron spot. Mortar to
match Solomon products
10h, weathered horizontal
strike. Vertical joints are
flush.



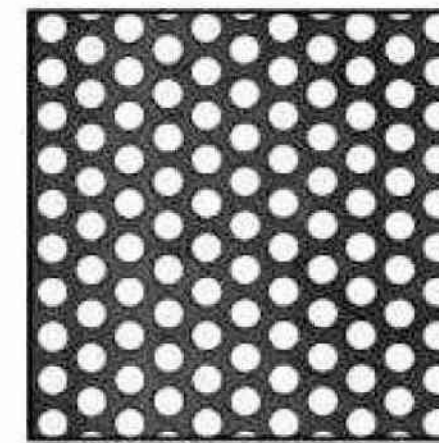
Standing Seam
Metal Roof



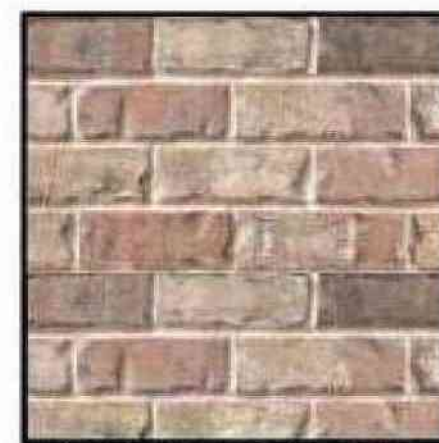
Composite Lumber Trex
Cladding
Color: Havana Gold



Panelized Fiber Cement
Cladding
Nichiha: Vintage Cedar



MCNICHOLS Perforated
Metal Panel
Powder Coat: Black



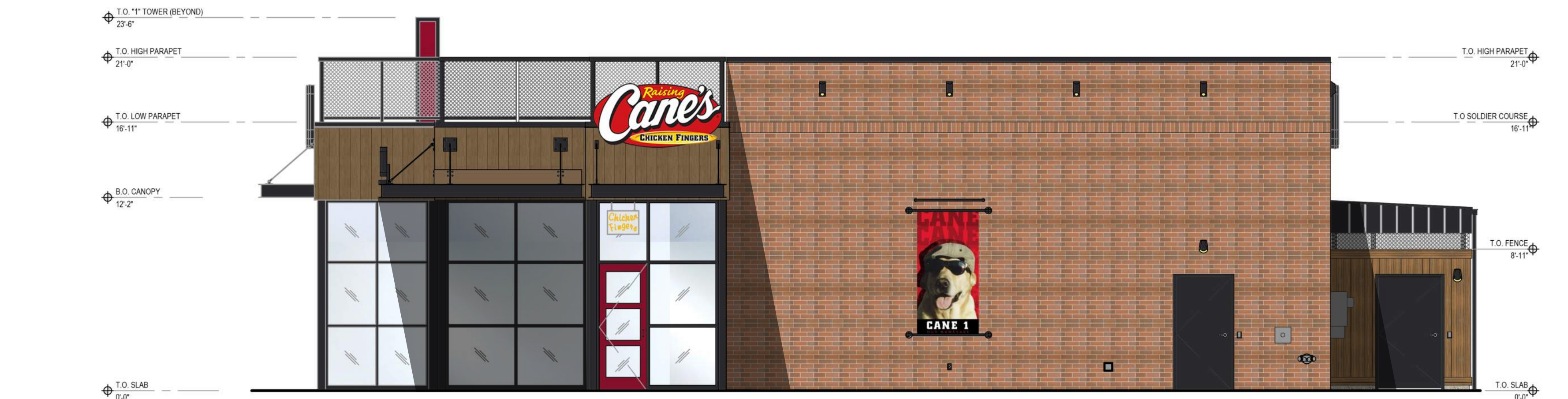
Boral: "Alamo" modular
brick, mortar to match
Solomon products 10h,
light buff sack rub finish.



P-10: Super Spec 23
Sherwin Williams Paint



4 FRONT ENTRY ELEVATION
EL-1 SCALE: 3/16" = 1'-0"



3 SIDE ELEVATION
EL-1 SCALE: 3/16" = 1'-0"



2 REAR ELEVATION
EL-1 SCALE: 3/16" = 1'-0"



1 DRIVE-THRU ELEVATION
EL-1 SCALE: 3/16" = 1'-0"



Restaurant Support Office
6800 Bishop Road, Plano, TX 75024
Tele: 972-769-3100 Fax: 972-769-3101

STORE:
RAISING CANE'S RESTAURANT
494 LINCOLN STREET
WORCESTER, MA 01605
PROTOTYPE: P6-V-Av
SCHEME: A/B
RESTAURANT #RC1233



Lakewood, Ohio 44107
17710 Detroit Avenue
Phone (216) 521-5134
Fax (216) 521-4824
www.adaarchitects.com

THIS DOCUMENT CONTAINS INFORMATION PROPRIETARY TO ADA ARCHITECTS, INC. UNAUTHORIZED USE OF THESE DOCUMENTS IS EXPRESSLY PROHIBITED UNLESS AGREED UPON IN WRITING.

ENGINEER INFORMATION:

SHEET REVISIONS

#	DATE	TYPE
1		
2		
3		
4		
5		
6		
7		
8		
9		
10		

EXTERIOR ELEVATIONS

DATE: 09/30/24

JOB NO. 24164

EL-1
SHEET NO.